

# JCB WHEELED EXCAVATOR | JS130W

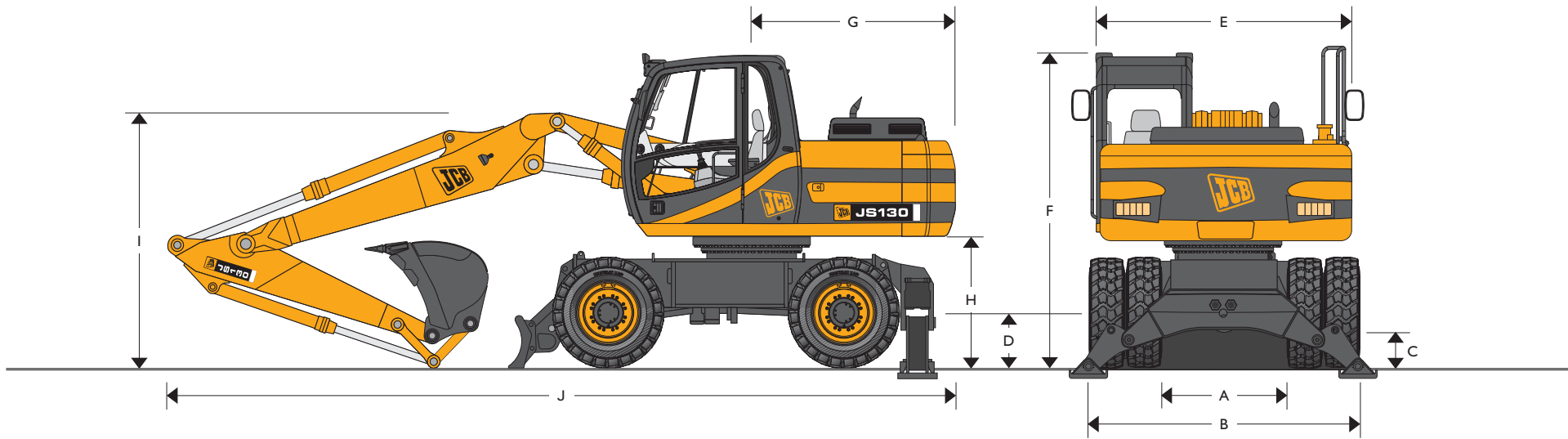


MAX. OPERATING WEIGHT

15145kg

NETT ENGINE POWER

70kW (94hp)



## STATIC DIMENSIONS

Dimensions in millimetres (ft-in)	
A	Internal width between dual wheels 1330 (4-4)
B	External width over dual wheels 2490 (8-2)
C	Ground clearance 350 (1-2)
D	Height to axle centre line dual wheels 498 (1-7)
	Height to axle centre line single wheels 519 (1-8)
E	Overall width (handrail removed) 2410 (7-11)
F	Height over cab 3040 (10-10)
G	Tail length 2050 (6-9)
H	Clearance under counterweight 1240 (4-1)

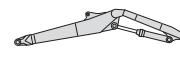
### Monoboom (4.7m)

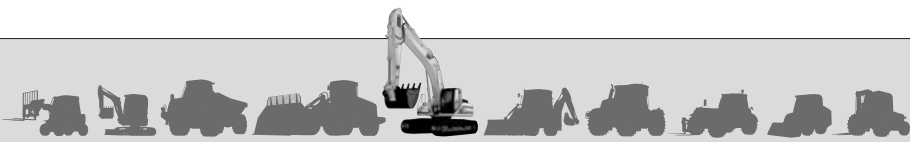
Dipper length		2.10m	2.50m	3.0m
I	Transport boom height	mm (ft-in)	3040 (10-0)	3040 (10-0)
J	Transport length	mm (ft-in)	7580 (24-10)	7600 (24-11)



### Triple articulated boom (5.0m)

Dipper length		2.10m	2.50m	3.0m
I	Transport boom height	mm (ft-in)	3040 (10-0)	3040 (10-0)
J	Transport length	mm (ft-in)	7310 (24-0)	7650 (25-1)

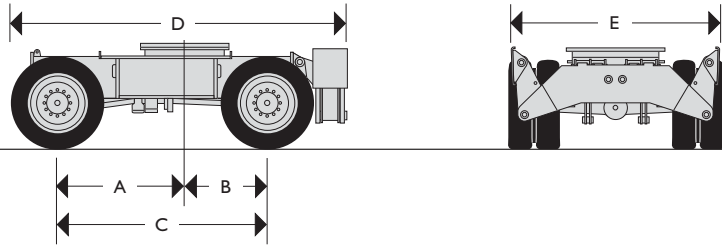




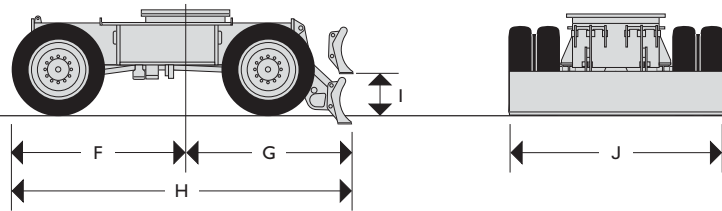
# JCB WHEELED EXCAVATOR | JSI30W



## CHASSIS OPTIONS

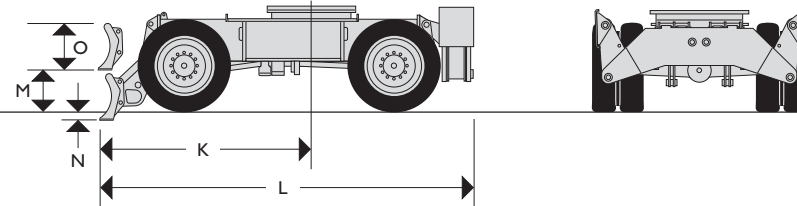


Dimensions in millimetres (ft-in)	
A	Centre of slew ring to front axle 1500 (4-11)
B	Centre of slew ring to rear axle 1000 (3-3)
C	Wheelbase 2500 (8-2)
D	Length including rear stabilizers 3950 (12-11)
E	Width over stabilizers (raised) 2480 (8-1)

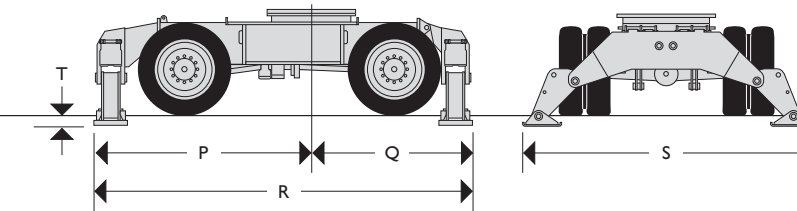


Dimensions in millimetres (ft-in)	
F	Centre of slew ring to face of front tyre 1990 (6-6)
G	Centre of slew ring to rear dozer blade (lowered) 2090 (6-10)
H	Length including rear dozer blade (raised) 4050 (13-3)
I	Ground level to bottom of rear dozer blade (raised) 450 (1-6)
J	Dozer blade width 2480 (8-1)

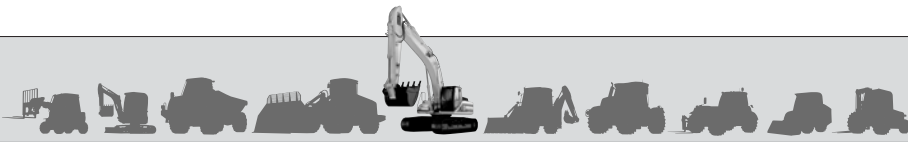
## CHASSIS OPTIONS



Dimensions in millimetres (ft-in)	
K	Centre of slew ring to front dozer blade (lowered) 2530 (8-3)
L	Length including stabilizers and dozer blade (raised) 4460 (14-7)
M	Ground level to bottom of front dozer blade (raised) 450 (1-6)
N	Dozer blade dig depth 130 (0-5)
O	Dozer blade height 500 (1-8)



Dimensions in millimetres (ft-in)	
P	Centre of slew ring to front stabilizers 2520 (8-3)
Q	Centre of slew ring to rear stabilizers 1960 (6-5)
R	Length including front and rear stabilizers 4480 (14-8)
S	Width over stabilizers (lowered) 3550 (11-8)
T	Stabilizer lift height 130 (0-5)



# JCB WHEELED EXCAVATOR | JS130W



## ENGINE

<b>Model</b>	Isuzu A4BG1T European Tier II emissions compliant.
<b>Type</b>	Water cooled, 4-stroke, 4-cylinder in-line, direct injection, turbocharged diesel.
<b>Nett power (ISO 3046-INF)</b>	70kW (94hp) at 2100rpm.
<b>Piston Displacement</b>	4.329 litres (264 cu.in.).
<b>Injection</b>	Mechanical governor.
<b>Air Filtration</b>	Dry element with secondary safety element and in cab warning indicator.
<b>Cooling</b>	Large capacity radiator.
<b>Starting system</b>	24 volt – 4.5kW.
<b>Batteries</b>	2 x 12 volt Heavy Duty.
<b>Alternator</b>	24 volt 40 amp.
<b>Refuelling pump</b>	Electric type.

## SWING SYSTEM

<b>Drive train</b>	Axial piston motor and planetary reduction final drive.
<b>Swing brake</b>	Hydraulic braking plus automatic spring applied disc type parking brake.
<b>Swing speed</b>	13.4RPM
<b>Swing gear</b>	Large diameter, internally toothed fully sealed grease bath lubricated.
<b>Swing lock</b>	Multi position switchable brake and mechanical lock.

## CHASSIS

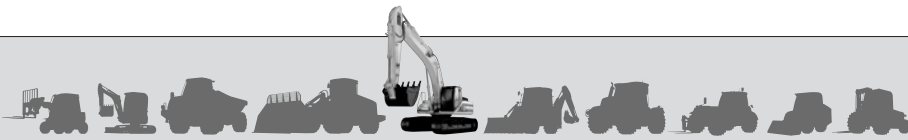
<b>Structure</b>	High strength flanged 'u' section.
<b>Chassis Options:</b>	
<b>Dozer Blade</b>	Front or rear pin mount.
<b>Stabilisers</b>	Front or rear pin mount, independently operable – plus combinations.
<b>Grab Stowage</b>	Heavy duty, pin mounted stowage bar.
<b>Transmission</b>	Hydrostatic drive via piston motor and powershift transmission.
<b>Travel speed</b>	Low ratio 7.6kph (4.7mph) High ratio 27kph (17mph) Creep speed 3.3kph (2mph)
<b>Axles</b>	Four wheel drive. Front steering axle oscillates for rough ground mobility.
<b>Axle load capacity</b>	26 tonnes
<b>Axle oscillation</b>	+/- 8.5 degrees
<b>Ground clearance</b>	350mm
<b>Steering</b>	Fully hydraulic system.
<b>Turning radius</b>	To outside of tyres 5.45m (17ft 10in) To outer edge of front mounted dozer blade 6.06m (19ft 10in)
<b>Brakes</b>	All hydraulic, dual circuit brake system.
<b>Parking Brake</b>	Built into the transmission.
<b>Gradability</b>	35° 70% max. continuous.

## EXCAVATOR END

<b>Booms</b>	Monoboom or triple articulation boom with choice of dipper lengths to match the requirements of reach, lift capacity and tearout.
<b>Bucket tipping links</b>	Fabricated type with choice of 1 tonne lift, max capacity lift and no-lift point – with link stowage lock (grab work).

## MAIN HYDRAULIC SYSTEM

<b>System</b>	Load-sensed hydraulic system with twin variable flow piston pumps providing flow-on-demand for maximum efficiency.
<b>Main pumps</b>	2 variable displacement axial piston type
Maximum flow	2 x 128 l/min (27 UK gpm)
Main circuit pressure	314 bar (4554 lb/in <sup>2</sup> )
With power boost	343 bar (4974 lb/in <sup>2</sup> )
<b>Servo pump</b>	Gear type
Maximum flow	22 l/min (4.8 UK gpm)
Servo pressure	40 bar (580 lb/in <sup>2</sup> )
<b>Optional Circuits:</b>	
<b>Hammer</b>	Includes automatic engine speed setting and return filter.
Maximum flow	123 l/min (27 UK gpm)
Maximum pressure	314 bar (pre-set to 180 bar). 4554 lb/in <sup>2</sup> (pre-set to 2610 lb/in <sup>2</sup> )
<b>Grab operation</b>	
Maximum flow	138 l/min (30 UK gpm)
Maximum pressure for grab ram operation	314 bar. 4554 lb/in <sup>2</sup>
<b>Low Flow Pipework</b>	Two options available, one with 20L/min flow and a second with an adjustable flow of 27-45L/min (6-10 UK gpm).
<b>Hydraulic Cylinders</b>	Hardened, chromed piston rods and end cushioning on boom, dipper and bucket crowd cylinder.
<b>Filtration</b>	
In tank	150 micron, suction strainer.
Main return line	10 micron, fibreform element.
Pilot line	10 micron, paper element.
Plexus by pass line	1.5 micron paper element.
Hydraulic hammer return	10 micron, reinforced microform element.
<b>Cooling</b>	Worldwide cooling is provided as part of a single faced cooling pack, in conjunction with the engine water cooler.



# JCB WHEELED EXCAVATOR | JSI30W



## TYRES

**Twins** 10.00 x 20 tyres (16PR) with spacer ring.  
**Singles** 18R x 19.5 tyres (Radials).

## CAB

Press steel with high strength rolled section frame. All tinted safety glass windows with fully opening two piece windscreen and in screen stowage. Gas strut assisted. Parallelogram wash/wiper. Opening door windows. Fan force fresh air ventilation and heater with windscreen demister.

Fully adjustable deluxe suspension seat with armrest and backrest recline. Radio cassette player with digital tuning. Cigarette lighter. Digital clock and storage box are standard fitment.

## INSTRUMENTATION

### AMS – Advanced Management System

The JCB Advanced Management System matches engine power and pump output to optimise machine performance in each of the four selectable work modes –

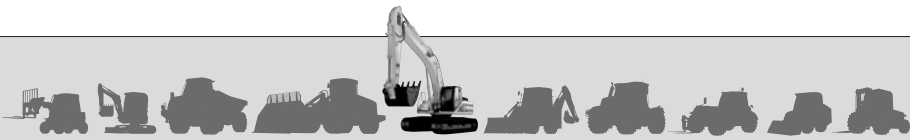
- H (Heavy) 100% engine and hydraulic power for maximum output.
- S (Standard) 90% engine and hydraulic power for good economical output.
- L (Light) 70% engine and hydraulic power for precision finishing and low fuel consumption.
- F (Fine) 70% power with permanent power boost for maximum lifting ability.

The system monitors all critical machine functions and operator selections which are shown on the display panel, conveniently mounted in the operators line of site. The diagnostic function built into the system constantly monitors machine usage and performance, as well as providing the service engineer with valuable information on any machine fault.

## STANDARD EXCAVATING BUCKETS

All buckets are JCB fully welded steel, with sealed, hardened steel pivot pins and replaceable wear parts.

Max Width mm (in.)	Capacity (SAE heaped) cu.m (cu.yd)	Weight kg (lb)
600 (24)	0.32 (0.42)	369 (814)
750 (30)	0.43 (0.56)	423 (933)
900 (36)	0.55 (0.72)	468 (1032)
1000 (40)	0.63 (0.82)	507 (1118)
1100 (44)	0.72 (0.94)	537 (1184)
1200 (48)	0.80 (1.05)	576 (1270)



# JCB WHEELED EXCAVATOR | JSI30W



## SERVICE CAPACITIES

	litres	UK gal
Fuel tank	240	53
Engine coolant	16.4	3.6
Engine oil	14.7	3.2
Swing reduction gear	2.2	0.5
Hydraulic system	124	27.3
Hydraulic tank	73	16.0
Transmission	3.4	0.7
Axle differentials (each)	Rear 12, Front 14	Rear 2.6, Front 3
Axle hubs (each)	2.0	0.5

## STANDARD EQUIPMENT

Auto engine warm up; Double element air cleaner; Heavy duty alternator; Electrics isolator; Heavy duty batteries; Tinted safety glass; Radio & cassette player; Operators storage box; Removable floor mat; Windscreen wash/wipe; Plug-in power socket; Power boost; Auto-idle; One-touch engine speed control; Hydraulic cushion control; Plexus hydraulic oil filtration; Grouped HSP pressure test points; Auxiliary pipework mounting brackets; Work lights – boom & mainframe mounted; Upper structure under covers; External mirrors; Handrail & nonslip pads; Creep speed; Tipping link with stowage lock; On the move gear change; Oscillating axle lock; Adjustable steer column; Spring assisted opening screen; Auto engine/hydraulics warm up; Front screen blind.

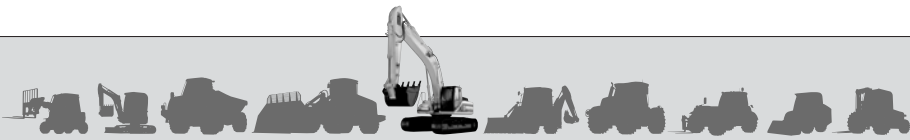
## OPTIONAL EQUIPMENT

Hose burst check valves & Overload warning system; Tipping link mounted lift points; General purpose buckets; Ditch/grading buckets; Hydraulic hammers; Hammer pipework; Low flow (grab rotate/weedcutter) pipework; Bucket to grab changeover pipework; Air conditioning; Cab mounted & rear work lights; Rotating beacon; Additional toolbox; Grab stowage bar; Bio-degradeable oil; Refuelling pump; Cab FOPS guard; Air suspension seat.

## OPERATING WEIGHTS

Chassis					
	12885kg (28405lb)	13325kg (29375lb)	13765kg (30345lb)	14305kg (31540lb)	14645kg (32290lb)
	13385kg (29510lb)	13825kg (30480lb)	14265kg (31450lb)	14805kg (32640lb)	15145kg (33390lb)

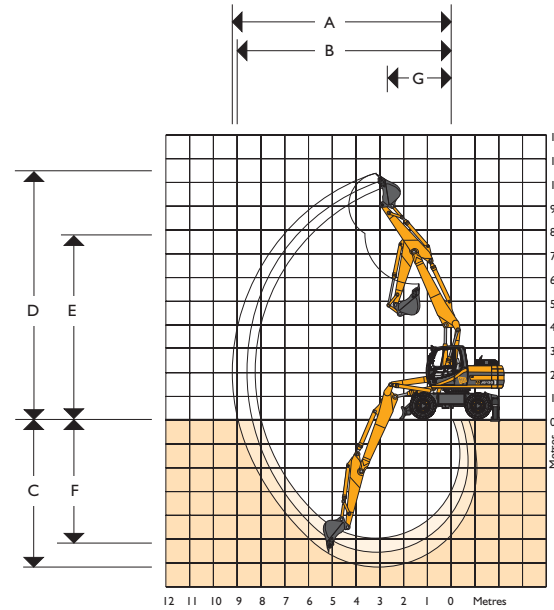
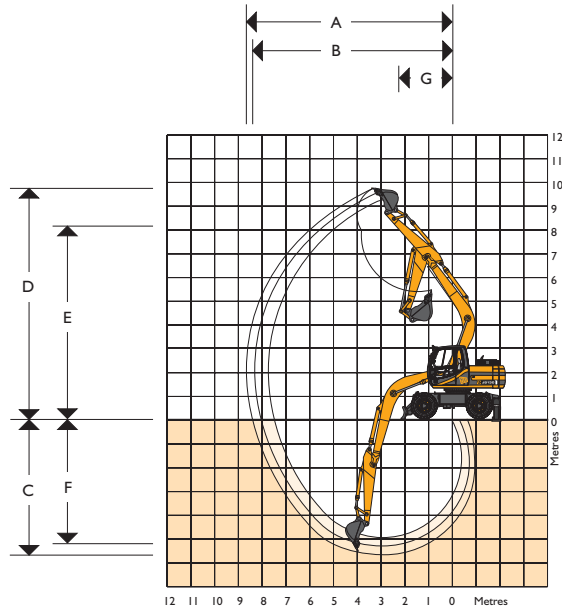
Machine equipped with excavating bucket and dual wheels. For single wheels subtract 400kg (880lb).





# JCB WHEELED EXCAVATOR | JSI30W

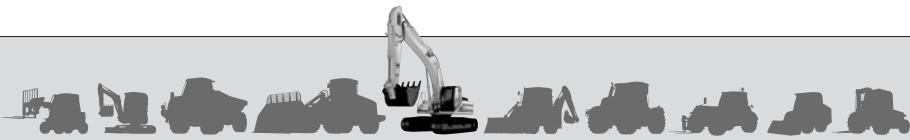


## WORKING RANGES



## WORKING RANGES





Boom							
		2.10m	2.50m	3.00m	2.10m	2.50m	3.00m
<b>Dipper length</b>		2.10m	2.50m	3.00m	2.10m	2.50m	3.00m
<b>A</b> Max digging reach	mm (ft-in)	7980 (26-2)	8350 (27-5)	8800 (28-10)	8360 (27-6)	8750 (28-8)	9235 (30-3)
<b>B</b> Max digging reach (on ground)	mm (ft-in)	7745 (25-5)	8125 (26-8)	8585 (28-2)	8140 (26-9)	8525 (27-11)	9000 (29-6)
<b>C</b> Max digging depth	mm (ft-in)	4775 (15-8)	5175 (16-11)	5675 (18-7)	5020 (16-6)	5425 (17-9)	5930 (19-6)
<b>D</b> Max digging height	mm (ft-in)	9185 (30-1)	9455 (31-0)	9775 (32-0)	9675 (31-9)	10000 (32-9)	10400 (34-2)
<b>E</b> Max loadover height	mm (ft-in)	6780 (22-3)	7050 (23-1)	7400 (24-3)	7275 (23-10)	7575 (24-9)	7950 (26-1)
<b>F</b> Max vertical wall cut depth	mm (ft-in)	4200 (13-9)	4600 (15-0)	5050 (16-6)	4240 (13-11)	4625 (15-2)	5105 (16-9)
<b>G</b> Min swing radius	mm (ft-in)	2050 (6-9)	2050 (6-8)	2410 (7-9)	2490 (8-2)	2575 (8-6)	2680 (8-9)
Bucket rotation		182°	182°	182°	182°	182°	182°
Dipper tearout	kgf (lbf)	8843 (19495)	7430 (16380)	6190 (13650)	8843 (19500)	7430 (16380)	6190 (13650)
Dipper tearout with boost	kgf (lbf)	9570 (21100)	8040 (17725)	6700 (14770)	9570 (21100)	8040 (17725)	6700 (14770)
Bucket tearout	kgf (lbf)	7720 (17020)	7720 (17020)	7720 (17020)	7720 (17020)	7720 (17020)	7720 (17020)
Bucket tearout with boost	kgf (lbf)	8350 (18400)	8350 (18400)	8350 (18400)	8350 (18400)	8350 (18400)	8350 (18400)



# JCB WHEELED EXCAVATOR | JSI30W

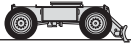





## MONOBOOM LIFT CAPACITIES

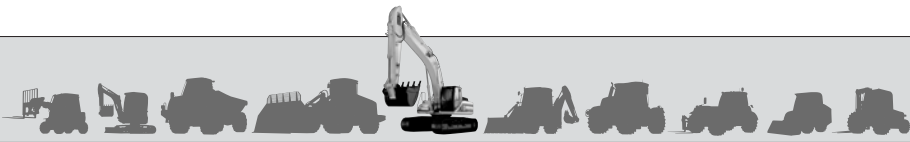
Chassis													
		2.10m	2.50m	3.00m	2.10m	2.50m	3.00m	2.10m	2.50m	3.00m	2.10m	2.50m	3.00m
<b>Dipper length</b>													
7.5m forwards 1m above ground (max. reach @ 1m above ground)	O/E	2410	2400	2390	2500	2490	2480	3280*	3180*	3020*	3280*	3180*	3020*
	360°	1520	1530	1500	1830	1830	1810	2370	2360	2350	2730	2720	2710
6.0m forwards 3m above ground	O/E	3220	3070*	2770*	3300*	3070*	2770*	3300*	3070*	2770*	3300*	3070*	2770*
	360°	2100	2130	2130	2490	2510	2520	3170	3070*	2770*	3300*	3070*	2770*
6.0m forwards Ground level	O/E	3030	3020	3010	3140	3130	3120	3950*	3860*	3690*	3950*	3860*	3690*
	360°	1910	1920	1880	2300	2290	2270	2970	2960	2940	3420	3420	3400
5.0m forwards 6m above ground	O/E	2260*	2460*	2020*	2260*	2460*	2020*	2260*	2460*	2020*	2260*	2460*	2020*
	360°	2260*	2460*	2020*	2260*	2460*	2020*	2260*	2460*	2020*	2260*	2460*	2020*
5.0m forwards -3m below ground	O/E	3990	3960	3910	4140	4140	4050	4760*	4820*	4800*	4760*	4820*	4800*
	360°	2480	2480	2400	2990	2460*	2910	3890	3860	3800	4510	4470	4420
3.0m forwards 3m above ground	O/E	4400*	3980*	3420*	4400*	3980*	3420*	4400*	3980*	3420*	4400*	3980*	3420*
	360°	4050	3980*	3420*	4400*	3980*	3420*	4400*	3980*	3420*	4400*	3980*	3420*
3.0m forwards Ground level	O/E	5820	5840	5830	6010	6030	5900*	6290*	6170*	5900*	6290*	6170*	5900*
	360°	3520	3570	3530	4260	4270	4270	5600	5620	5620	6290*	6170*	5900*

Bucket weight 468kg. All weights in kg. Lifting capacities marked \* are based on hydraulic capacity.

## TRIPLE ARTICULATION LIFT CAPACITIES

Chassis													
		2.10m	2.50m	3.00m	2.10m	2.50m	3.00m	2.10m	2.50m	3.00m	2.10m	2.50m	3.00m
<b>Dipper length</b>													
7.5m forwards 1m above ground (max. reach @ 1m above ground)	O/E	2470	2460	2450	2560	2550	2540	3120*	3110*	2940*	3210*	3110*	2940*
	360°	1550	1540	1530	1870	1860	1850	2420	2410	2400	2790	2780	2770
6.0m forwards 3m above ground	O/E	3230*	3030*	2770*	3230*	3030*	2770*	3230*	3030*	2770*	3230*	3030*	2770*
	360°	2140	2160	2180	2540	2560	2590	3200	3030*	2770*	3230*	3030*	2770*
6.0m forwards Ground level	O/E	3080	3080	3060	3190	3190	3170	3850*	3760*	3610*	3850*	3760*	3610*
	360°	1920	1920	1890	2320	2310	2290	3010	3010	2990	3480	3470	3460
5.0m forwards 6m above ground	O/E	2690*	2460*	2080*	2690*	2460*	2080*	2690*	2460*	2080*	2690*	2460*	2080*
	360°	2690*	2460*	2080*	2690*	2460*	2080*	2690*	2460*	2080*	2690*	2460*	2080*
5.0m forwards -3m below ground	O/E	4060	4020	3970	4200	4170	4110	4650*	4700*	4680*	4650*	4700*	4680*
	360°	2490	2460	2400	3020	2980	2920	3940	3910	3850	4570	4540	4480
3.0m forwards 3m above ground	O/E	4500*	4160*	3640*	4500*	4160*	3640*	4500*	4160*	3640*	4500*	4160*	3640*
	360°	4070	4160*	3640*	4500*	4160*	3640*	4500*	4160*	3640*	4500*	4160*	3640*
3.0m forwards Ground level	O/E	5870	5890	5850	6070	6060	5860*	6150*	6080*	5860*	6150*	6080*	5860*
	360°	3510	3520	3510	4260	4270	4270	5630	5650	5650	6150*	6080*	5860*

Bucket weight 423kg. All weights in kg. Lifting capacities marked \* are based on hydraulic capacity.



## A GLOBAL COMMITMENT TO QUALITY

JCB's total commitment to its products and customers has helped it grow from a one-man business into Britain's largest privately owned manufacturer of backhoe loaders, crawler excavators, wheeled excavators, telescopic handlers, wheeled loaders, dump trucks, rough terrain fork lifts, industrial fork lifts, mini/midi excavators, skid steer loaders and tractors.

By making constant and massive investments in the latest production technology, the JCB factories have become some of the most advanced in Europe.

By leading the field in innovative research and design, extensive testing and stringent quality control, JCB machines have become renowned all over the world for performance, value and reliability.

And with a global sales and service network of over 400 distributors and agents, the company exports over 70% of its production to all five continents.

Through setting the standards by which others are judged, JCB has become one of Britain's most impressive success stories.

